



# **American Red Cross Overview**

## **National Disaster Medical System Briefing**

DRAFT 18 Jan 2008



**American  
Red Cross**

# Mission of the American Red Cross

The American Red Cross, a humanitarian organization led by volunteers and guided by its Congressional Charter and the Fundamental Principles of the International Red Cross Movement, will provide relief to victims of disasters and help people prevent, prepare for, and respond to emergencies.



**American  
Red Cross**

# **Fundamental Principles of the International Red Cross Movement**

Humanity

Impartiality

Neutrality

Independence

Voluntary Service

Unity

Universality

# Organizational Components

Programs and services are integrated at the Local, State, Regional and National levels and are provided through:

- **Manpower:** American Red Cross has over 1 million Volunteers & ~30,000 paid staff
- **Chapters:** 756
- **Armed Forces Emergency Services Units:** 100
- **Blood Regions:** 35
- **Service Areas:** 8
- **Partnerships:** with Government and other Non-Governmental Organizations (NGOs)

# Primary Lines of Service

- Biomedical Services
- Service to the Armed Forces
- Preparedness, Health & Safety Services
- International Services
- **Disaster Services**



**American  
Red Cross**

# **Disaster Services**

**Mass Care (Sheltering, Feeding)**

**Health Services**

**Mental Health Services**

**Welfare Inquiries**

**Casework**

**Critical Response Team**

**Spiritual Response Team**

**Disaster Childcare**

**All Red Cross Disaster Assistance is Free!**

# Potential Disaster Responses

The American Red Cross responds to over **70,000** disasters annually (which range in type and complexity to include):

- **Fires:** In Single Family Homes to large Apartment Complexes
- **Natural Disasters:** Hurricanes, Tornadoes, Wildfires, Earthquakes, Floods, and Severe Weather
- **Other Man-made Incidents:** Terrorist Events, Aircraft and other transportation events, mass fatalities, catastrophic and other events

# ARC National HQ Assets

- **Disaster Operations Center (DOC)**
- **Disaster Services Human Resources (DSHR) System with ~65,000 members**
- **Emergency Response Vehicles (ERVs) - ~310**
- **Warehouses - 33 (1.2 Million Sq Ft)**
- **Emergency Communication Response Vehicle (ECRV) - 9**
- **Critical Response Team (CRT)**





**American  
Red Cross**

# Disaster Services - Fleet



**Emergency Response Vehicle (ERV)**



**HUMMER**



**Logistics Initial Response  
Vehicle (LIRV)**



**Emergency Response Communications Vehicle (ECRV)**



**American  
Red Cross**

# How We Ensure Services are Provided

It all starts with a

***Chapter***

Must be able to respond to any disaster

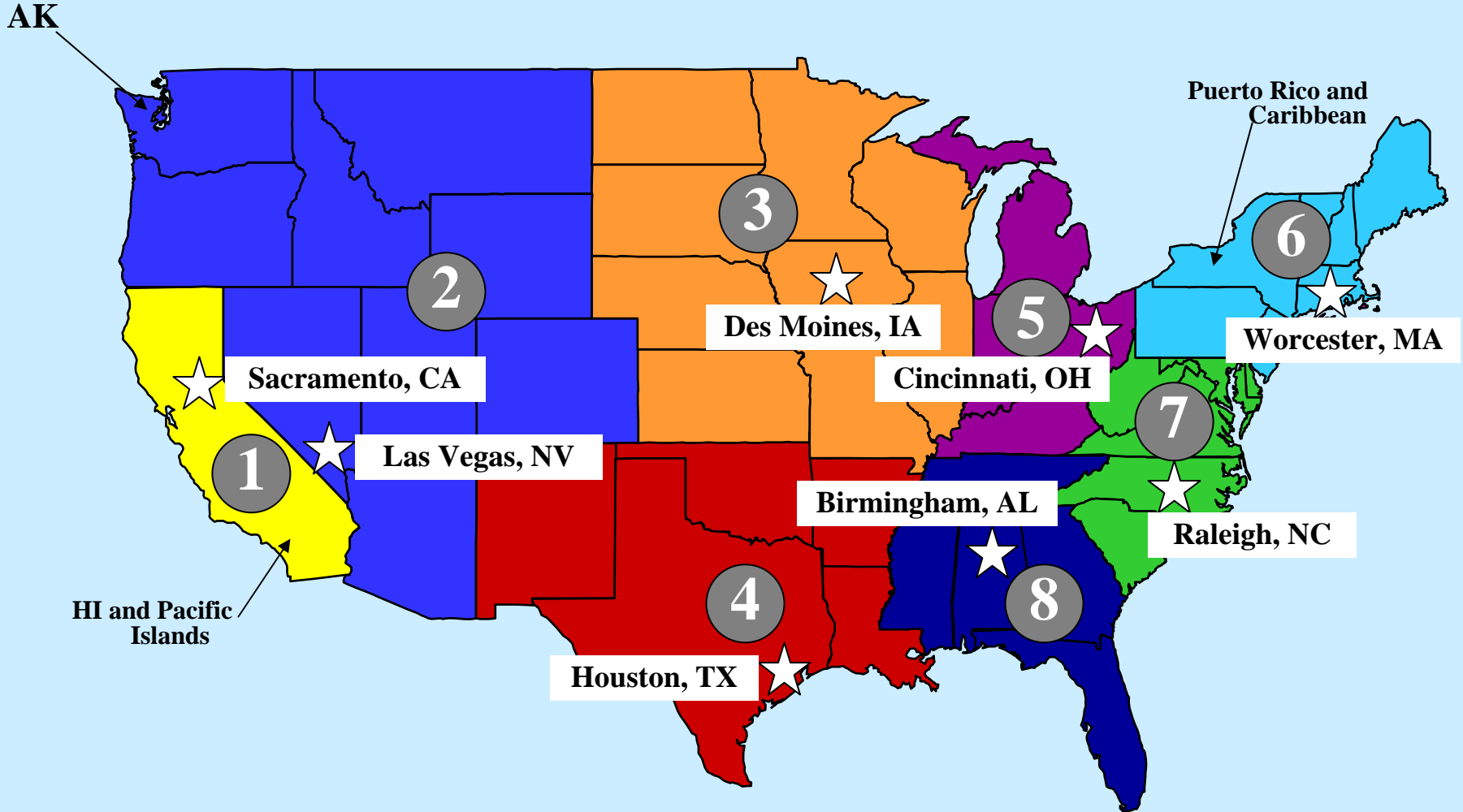
**24/7/365**

*Within a 2 hour time frame*



**American  
Red Cross**

# Service Area Boundaries and Headquarters Locations





**American Red Cross**

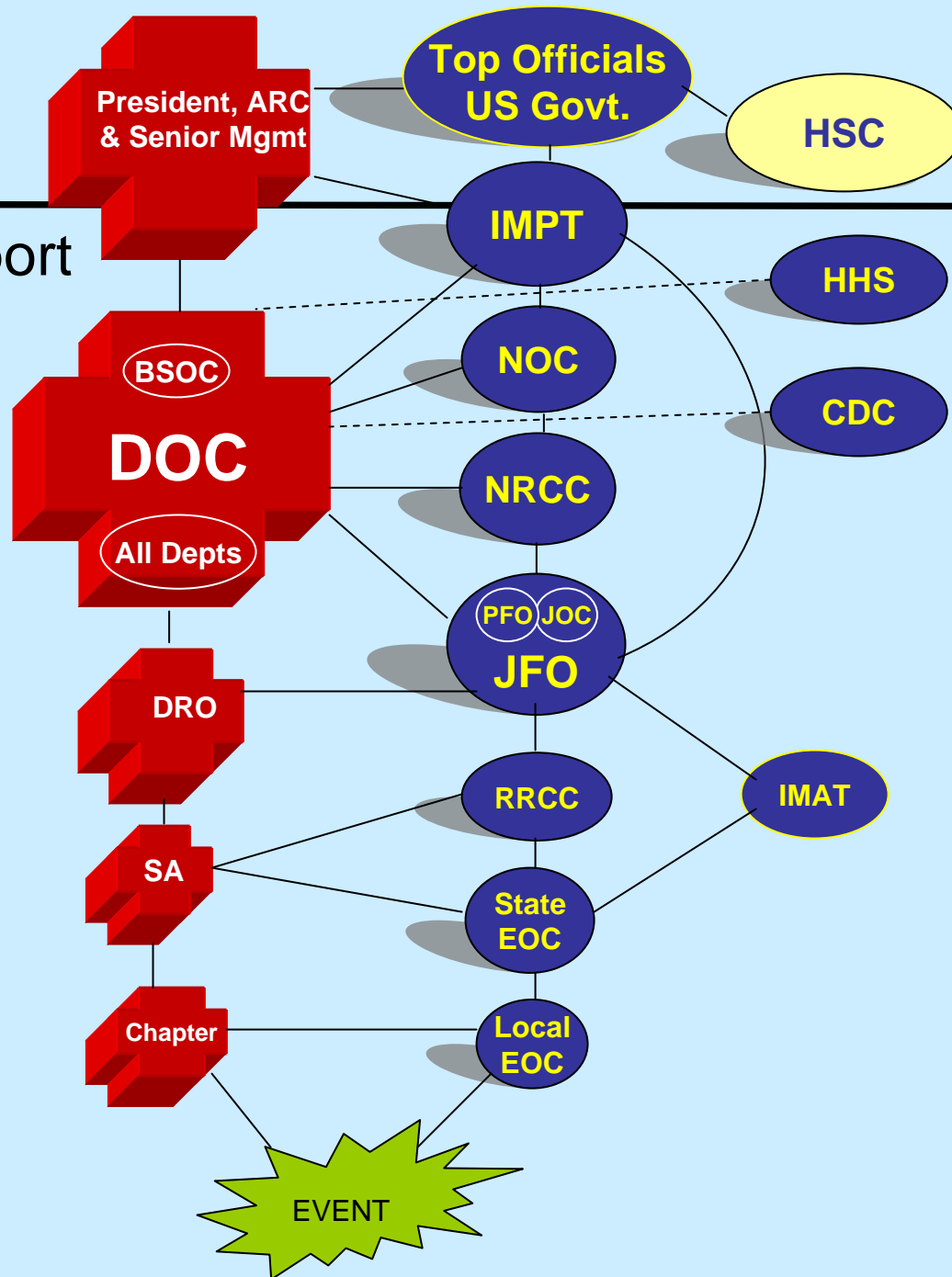
# Red Cross Operational Support to Government

## Key

- ARC** – American Red Cross
- BSOC** – Biomedical Services Ops Center
- CDC** – Centers for Disease Control in Atlanta, GA
- DHS** – Department of Homeland Security
- DOC** – Disaster Operations Center
- DRO** – Disaster Relief Operation
- EOC** – Emergency Operations Center
- FEMA** – Federal Emergency Management Agency
- HHS** – Department of Health & Human Services
- HSC** – Homeland Security Council at the White House
- IMAT** – Incident Management Assist Team (FEMA)
- IMPT** – Incident Management Planning Team (DHS)
- JFO** – Joint Field Office (FEMA)
- JOC** – Joint Operations Center (FBI lead); no ARC liaison here
- NOC** – National Operations Center (DHS)
- NRCC** – National Response Coordination Center (FEMA)
- NOC** – National Operations Center (DHS)
- PFO** – Principal Federal Official (DHS); no ARC liaison here
- RRCC** – Regional Response Coordination Center (FEMA)
- SA** – Service Area

**Note** – Solid line indicates automatic deployment of a Red Cross representative to the government entity; dotted line indicates deployment if requested

(Jan 2008)



# Federal Partners



- **Department of Homeland Security**

- Work closely with FEMA
- Member of Incident Management Planning Team (IMPT)
- NOC presence
- Participate in TOPOFF & other national level exercises

- **Department of Health & Human Services**

- Office of the Assistant Secretary for Preparedness & Response (OASPR)
- Centers for Disease Control and Prevention (CDC)
- Administration for Children and Families (ACF)



- **Department of Defense**

- NORTHCOM
- National Guard Bureau

- **Department of Justice**

- Federal Bureau of Investigation Office for Victim Assistance

- **National Transportation Safety Board (NTSB)**

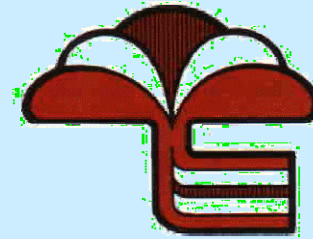


# Non-governmental Partners

- National Voluntary Organizations Active in Disaster (NVOAD)

[www.nvoad.org](http://www.nvoad.org)

- Professional Chaplaincy Partners
  - APC, NACC, NAJC, ACPE, AAPC, ICPC



QuickTime™ and a  
TIFF (Uncompressed) decompressor  
are needed to see this picture.



**American  
Red Cross**

# Questions and Answers





**American  
Red Cross**

## **For Further Information**

**Earl Johnson, Volunteer Partner,  
Coordinator, Spiritual Care Response Team  
(SRT)**

**(202) 303-8642**

**[Johnnsonea@usa.redcross.org](mailto:Johnnsonea@usa.redcross.org)**

**American Red Cross, National Headquarters  
2025 E Street NW, Washington, D.C. 20006**