

Pre-planning to Serve  
Special Needs  
Populations Post-  
Disaster  
NDMS March 2008

# Presenters

- **Karen Olness, MD**
- Professor of Pediatrics, Family Medicine and Global Health,  
Case Western Reserve Univ, Cleveland
- Founding Director, Rainbow Center for Global Child Health
- **James J Augustine, MD**
- Dept of Emergency Medicine, Wright State Univ
- Medical Director, Atlanta Fire and Hartsfield Jackson Intl Airport

The presentation will feature the needs of a population, including pediatric and senior groups, people with physical and mental challenges, and others with special medical needs.

Planning for special needs populations includes special equipment and adjuncts, mental health considerations, patient handling and decon, pharmacy supplies, hygiene, support of family and caretakers.

# Objectives

- Explain the term special populations and which segments of the population are considered
- Identify some major barriers that special needs populations encounter in disaster environments
- Describe some steps that emergency responders and managers must take to better serve these populations

# Prevention and Preparedness.

We have saved people to live in  
our communities

- ◆ 50s, 60s: Nuclear Warfare
- ◆ 70s: Trauma, Hearts, Burns
- ◆ 80s: Hazardous Materials
- ◆ 90s: AIDs, Hepatitis
- ◆ 2000s: Terrorism, SARS & ??

# Capacity Issues: Day to Day Surge Challenges

- Success in Prevention = More Seniors, Patients with Chronic Illnesses
- ED Volume Increases over Years

# Planning for Special Needs Populations

# Needs Planning

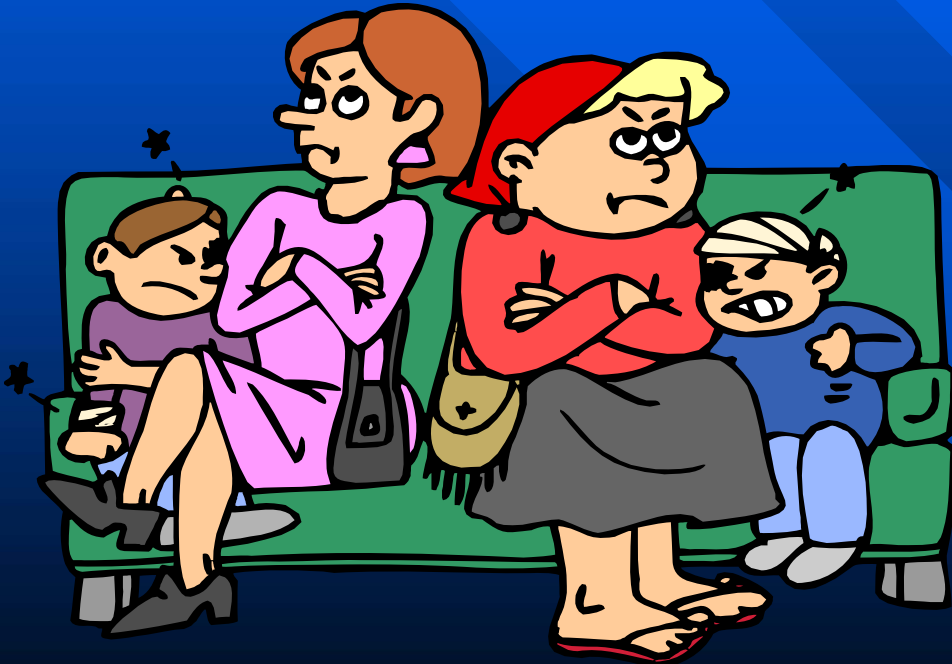
- Size or Number of Persons
- Infrastructure Intact or Not
- Shelter in Place or in Shelters
- Weather Threats
- Community Overwhelmed or not

# Needs Planning Grid

	Infrastructure Intact	Infrastructure Lost
Single Facility, Shelter in Place	A	B
Small Area, Shelter in Place	C	D
Large Area, Evacuation Needed	E	F
Overwhelming Disaster	G	H

# Scenarios

- Simple Scenario: Provide support for Shelter in Place
- Wider Affect: Anthrax in the Mail  
Population Education or Care



# Special Need Populations

- Defined by inability to independently negotiate Activities of Daily Living
- In the process of evacuation need assistance
  - Can be defined also by "no money, no car, and no place to go"
- In evacuation, unable to identify an available family, friend or caregiver
- In certain incidents may also be an out of town tourist that was staying in hotel or other facility

# Focused Assistance Incidents

Diabetic Patients living  
in Community

# Diabetes Population: Special Needs and Challenges

- Medication
- Nutrition
- Monitoring
- Activities
- Foot care
- Vision
- Mental health

# Diabetic Population

Training thru American  
Red Cross, Diabetic  
Associations

# Assistance for Disaster Recovery

Trained to seek Red Cross Service Centers

- Assist in handling the survivors immediate needs
- Financial assistance for clothing, bedding, medication, eye glasses
- Reconnect with community and support systems

# Components of a Disaster Plan

- Key Emergency Information
- Diet Considerations in a Disaster
- Food Supply and Storage
- Medical and Other Supplies
- Medication Storage
- Sick Day Rules

# Important Disaster Information

- Safest places to go, depending on type of disaster
- Methods to get there
- Securing Home: Location of utility cut-off valves and switches
- Alternate shelters
- Connections w Family, Support System

# Key Emergency Information

- Local emergency contacts
- Out-of-town contacts
- Medical providers
- Medication list, including allergies
- Extra copies of prescriptions
- Medical equipment needs

# Population Evacuation Challenges

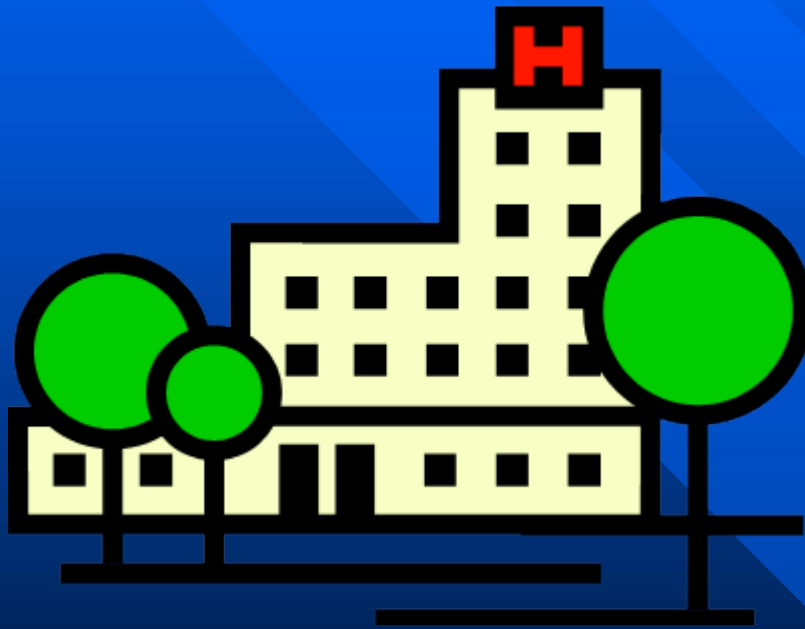
- Acuity of evacuation leads to predictable needs
- Evacuation Types
  - Days
  - Hours
  - Minutes
- The more acute the evacuation, the more needs

Identified as a community  
planning need in the after  
action reports of the  
Miamisburg Train  
Derailment in 1986

# "Go Needs"

- Transportation
- Shelter
- Caregiver assistance
- Medical appliances or assists -  
glasses, hearing aids, wheelchair,  
bed, nebulizer, medications
- Pets and stuff

# Selective Use of Hospitals as Special Needs Shelters



- Yes, in a Crisis
- Need urgent care
- Hospitals not otherwise overwhelmed
- Loss of electricity, medical care system

# Study Needs for DMAT

- Density maps for special needs populations
- Focus on institutional and congregation homes
- Pre-education of that population and their caregivers

# Pre-identification and logging for emergency preparedness leaders

- Pre-placement of equipment
- Prediction of rescuer manpower needs, especially around acute evacuations
- Needed sheltering capabilities, equipment, and manpower
- Plan to make for more orderly evacuations considering these populations

# Mitigation Planning

- Reducing the cost of the evacuation process
- Shelter needs change over time
  - Hours to days
  - Weeks
  - Months or longer

# Public Health Approaches

## Shelter in Place

- Community Education
- Phone Access
- Send selected assistance

## Evacuate

- Educate in Shelters
- Provide Care

# Sounds like PanFlu Prep?

- Community Response Needed
- Responders at high risk
- Prioritize home care
- Educate over Cable TV and Radio
- Send out Crisis Care Packages

# All Hazards Approach

- ◆ Weather Event
- ◆ Incident: Chemical
- ◆ Incident: Nuclear
- ◆ Incident: Biological
- ◆ Terror Event

# Terror Events: Special Needs for Mental Health Relief

- Remember the Liability Issues

# Where's The Help?

- Good Law
- Good Prep Planning
- Local Partnerships
- Link to Public Health and Public Safety