

“Caring for the Dead in a Pandemic”

Deborah H. Orecki, Director
New York State Department of Health
Bureau of Funeral Directing

March 18, 2008
NDMS Training Summit

- **Epidemic**- A disease attacking many people in a community simultaneously.
- **Pandemic**- A disease affecting or attacking the population of an extensive region.

Pandemic Flu

- Spanish Flu
- Avian Flu (Bird Flu)?

When is a pandemic a mass fatality?

Pandemic Preparedness

Surge Capacity

COOP (Continuity of Operation Plan)

Scalable Plans

- **Stakeholders**

- Coroners/medical examiners
- Hospital
- Funeral directors(undertakers, embalmers, morticians)
- Nursing homes
- Registrar
- Cemetery
- Law enforcement
- Local health department
- State Health Department
- Local/State Funeral Directors Association

Planning Considerations

Legal authority in charge of the dead

- Coroner
- Medical Examiner

Morgue

- **Permanent morgue**
 - Free standing
 - Hospital
 - Other

– Temporary morgue

- **Site considerations**

 - Sufficient electrical capacity

 - Refrigeration truck access

 - Forklift access

 - Fuel capability-access for diesel, gas, propane vendors to re-supply vehicles

 - Communications

 - Office Space

 - Rest/debriefing area, Refreshment area, Restrooms

- **Staffing (credentialing)**

– **Equipment**

- Desks, Tables, Chairs
- Office Equipment
- Towels, Sheets
- Body Bags
- Hoses for Water
- Extension cords for Electric
- PPE
- Digital Cameras
- Office Supplies
- Potable water and light refreshments in rest areas
- Disinfectant solution and equipment
- Aluminum tags for identification of body bag and body contained therein

- Refrigeration capabilities
- Tagging of Remains-universal tagging
- Body bags

Transfer of Remains from place of Death

- Who will transport?
- What will be used for transport?
- Accountability

- **Intake**
 - Will all remains go to morgue?
 - Who will do intake?
 - What information regarding decedent will be taken?
 - How will the information be maintained?
 - What information will be transmitted to local health department?
 - Accountability

Identification

- What methods will be used for identification?
 - Presumptive identification
 - Visual
 - Forensic
 - Maintaining a record of identification

Processing

- Autopsies
 - Base line
- Cause of Death
- Batch death certificates
- Storage- refrigeration

Release

- Release to funeral firm
- Release to temporary interment
- Body bags, disaster pouch
- Report to local health department numbers
- Burial permits, batch?
- ACCOUNTABILITY

Is your funeral firm ready?

- Do you have a scalable plan?



Funeral Firm Considerations

Plan considerations

Staffing

- Professional

- Secretarial

- Support

Supplies

- Embalming fluid

- Germicidal soap

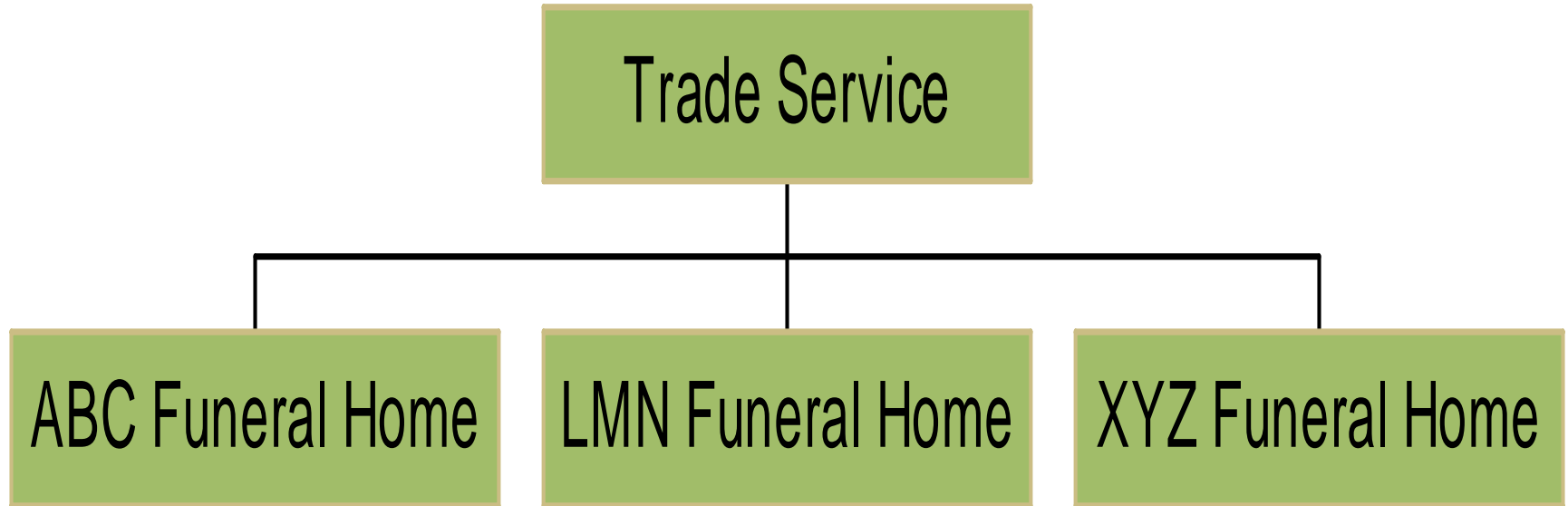
- PPE

Merchandise

- Caskets

- Sundries

Problems



Other Stakeholders

- **Local Health Department**
 - EPI/ Surveillance
 - Education Training
 - Legal

- Law Enforcement
 - Investigation
 - Unattended deaths
 - Security
 - Morgue/intake
 - Collection points

Death Certificates

- Completion
- Content
- Filing
 - **Electronic**
 - **Manual**

Final Thoughts

- Mass fatality stemming from a pandemic disease will not be a D-MORT incident response.
- Volunteers in your community will be needed.
- Your expertise will be an asset to your community.

- Questions

For additional information

www.pandemicflu.gov

www.health.state.ny.us

Thank you