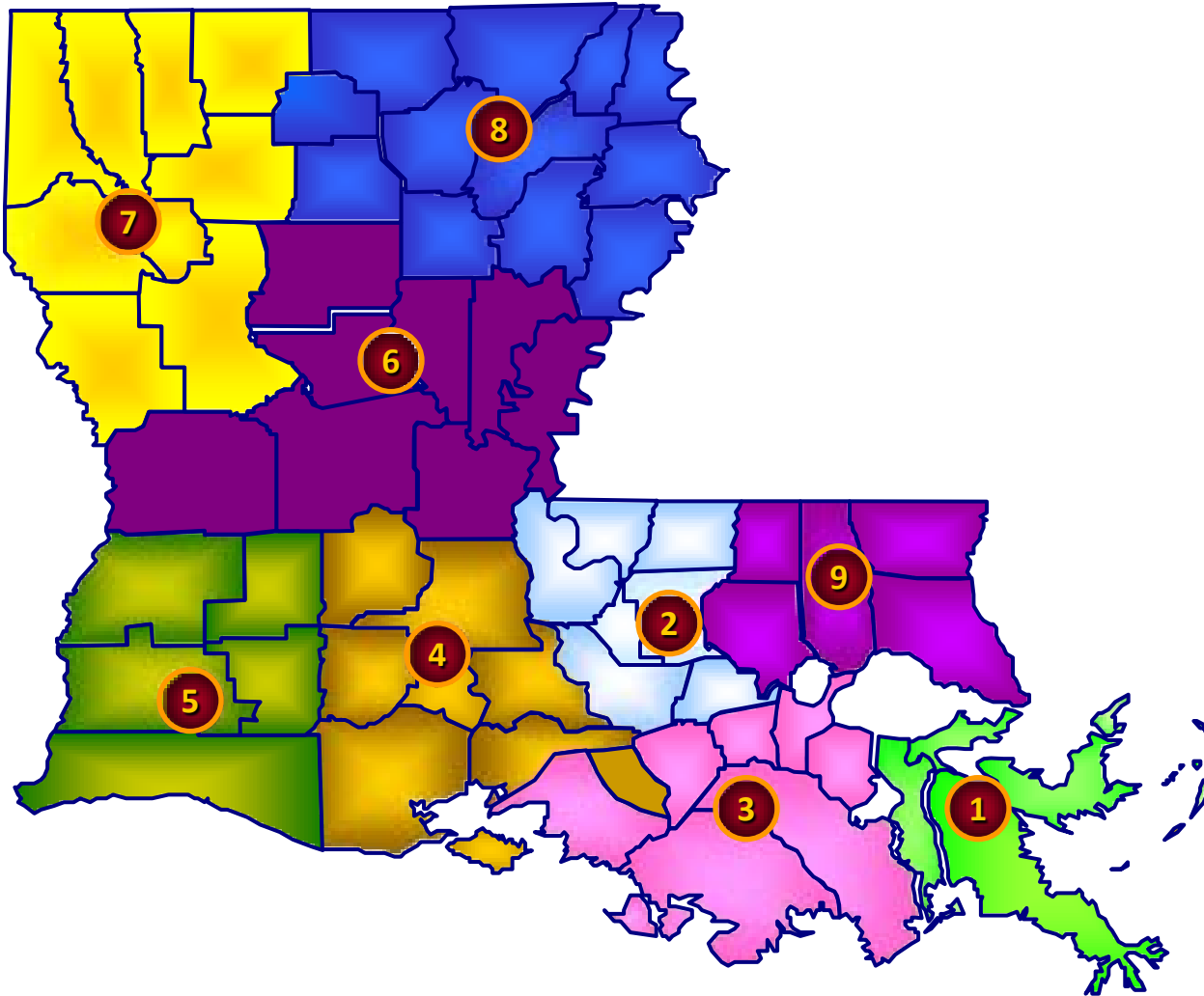


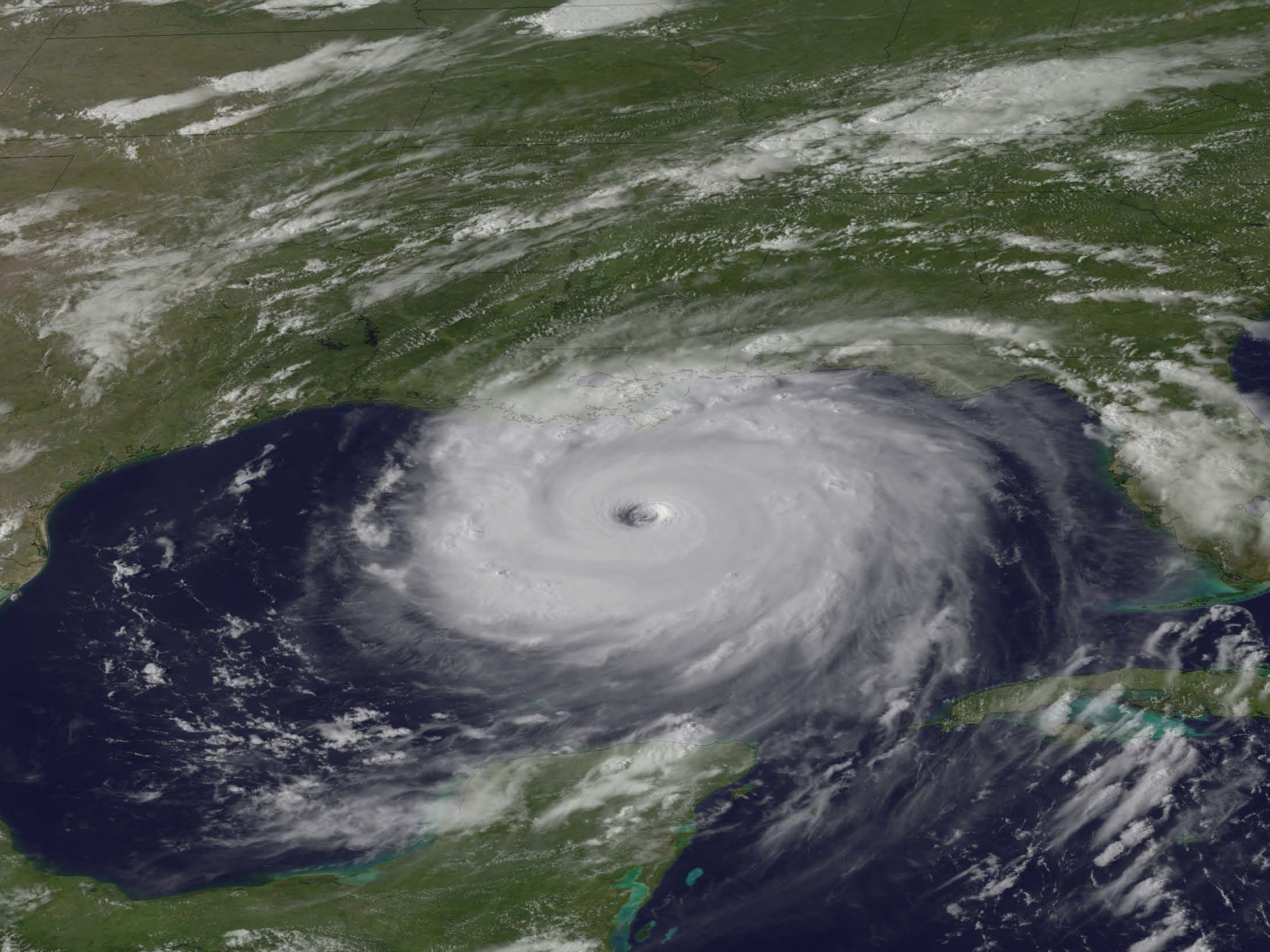
***“Okay! We did it!
Now let's do it right.
Integrated Patient Movement:
Key Elements of Planning for
Medical Evacuees.”***

Handling Request at the Local Level to
Evacuate Patients

Cynthia Davidson, ASN, JD
Region 1 Hospital DRC
Louisiana Department of Health

Louisiana Regions





Integrated Patient Movement

- Hurricanes
 - Katrina and Rita
 - Gustav and Ike
- Train Derailment – Chemical Spill
- Ice Storm
- Water Outage
- Fire

Region 1 Hospital Facility

Jefferson

Tier 1

East Jefferson General Hospital (435)

Ochsner Medical Center (456)

Ochsner Medical Center – Kenner (123)

Ochsner Medical Center – Westbank (183)

Tulane HCA Lakeside (102)

West Jefferson Medical Center (451)

Tier 2

Behavioral Health

Oceans Kenner (18) Oceans Gretna (12)

River Oaks (126)

LTAC

Oceans Meadowcrest (27)

Ochsner Extended Care (32)

Saint Theresa Kenner (24) Saint Theresa Metairie (31)

Triumph Louisiana Specialty (36)

Specialty/Rehab

Crescent City Surgical Centre (24)

Omega (16)

United Rehabilitation Hospital (26)

Total Beds: 2122

Orleans

Tier 1

Children's Hospital (247)

LSU Interim Public Hospital (391)

Ochsner Baptist (83)

Touro (360)

Tulane Medical Center (243)

Tier 2

Behavioral Health

Beacon (24)

Community Care (38)

Seaside (24)

Triumph Louisiana Specialty (12)

LTAC

Kindred (168)

St. Catherine (21)

Specialty/Rehab

Saint Charles Surgical Hospital (17)

Total Beds: 1628



96 Hours

H-96: State ESF-8 will notify both GOHSEP and FEMA Region 6 to initiate emergency declaration for possible evacuation of medical facilities.



72 Hours

LA

GULF OF MEXICO

H-72: The decision to stage Federal Assets must be made by Fed/State Unified Command and communicated to FEMA for activation.



60 Hours



H-60: CASF/DMAT arrives at MMP and will require 12 hours to set up.

H-60: DRC to gather patient demographics (GPMRC form) regardless of decision to evacuate.

H-60: LANG and ground vehicles to assemble at MMP(s).

H-60: Hospital CEOs to communicate decision to either A) Shelter in place B) partial evacuation or C) full evacuation



60 Hours



H-60: CASF/DMAT arrives at MMP and will require 12 hours to set up.

H-60: DRC to gather patient demographics (GPMRC form) regardless of decision to evacuate.

H-60: LANG and ground vehicles to assemble at MMP(s).

H-60: Hospital CEOs to communicate decision to either A) Shelter in place B) partial evacuation or C) full evacuation



40 Hours

H-51 to 48: GPMRC to create patient-bed-lift plan and assign patients to specific planes

H-48: First load of patients to depart from airhead.

LA

GULF OF MEXICO



40 Hours

H-51 to 48: GPMRC to create patient-bed-lift plan and assign patients to specific planes

H-48: First load of patients to depart from airhead.

LA

GULF OF MEXICO

Decision Time

- State
 - Executive Order
 - Parish
 - Evacuation
 - Voluntary
 - Mandatory
 - Counterflow
- H-30

Decision Time

- Hospitals H-60
 - Storm Characteristics
 - Hardening of the facility
 - Condition of the Parish Infrastructure
 - Types of Patients

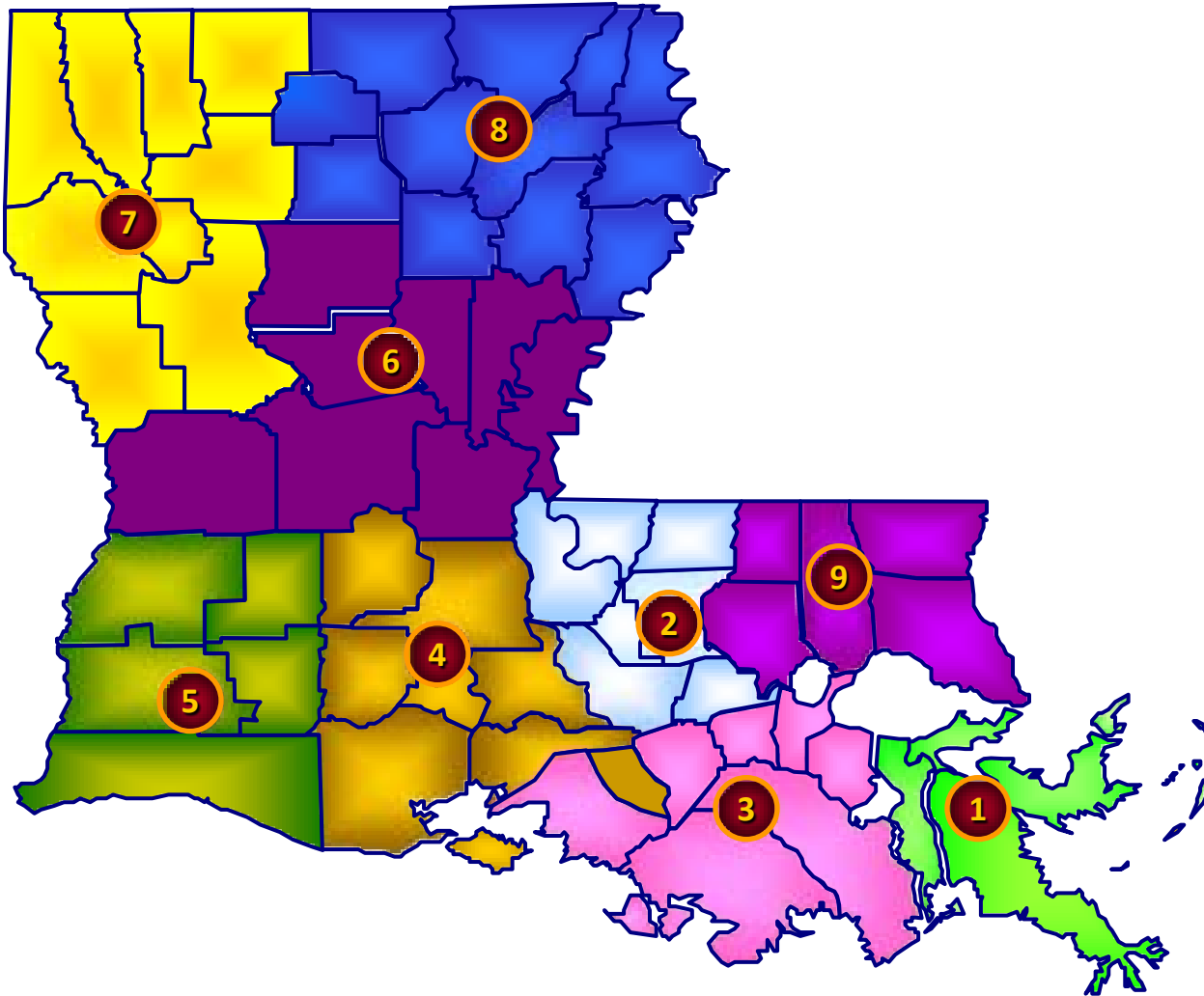
Decision Time



Issues

- Timeliness of request
- Loss of Control
- Receipt of Assets for Transportation
- In State resources for patients that can not be moved by NDMS
- Doable Manifests

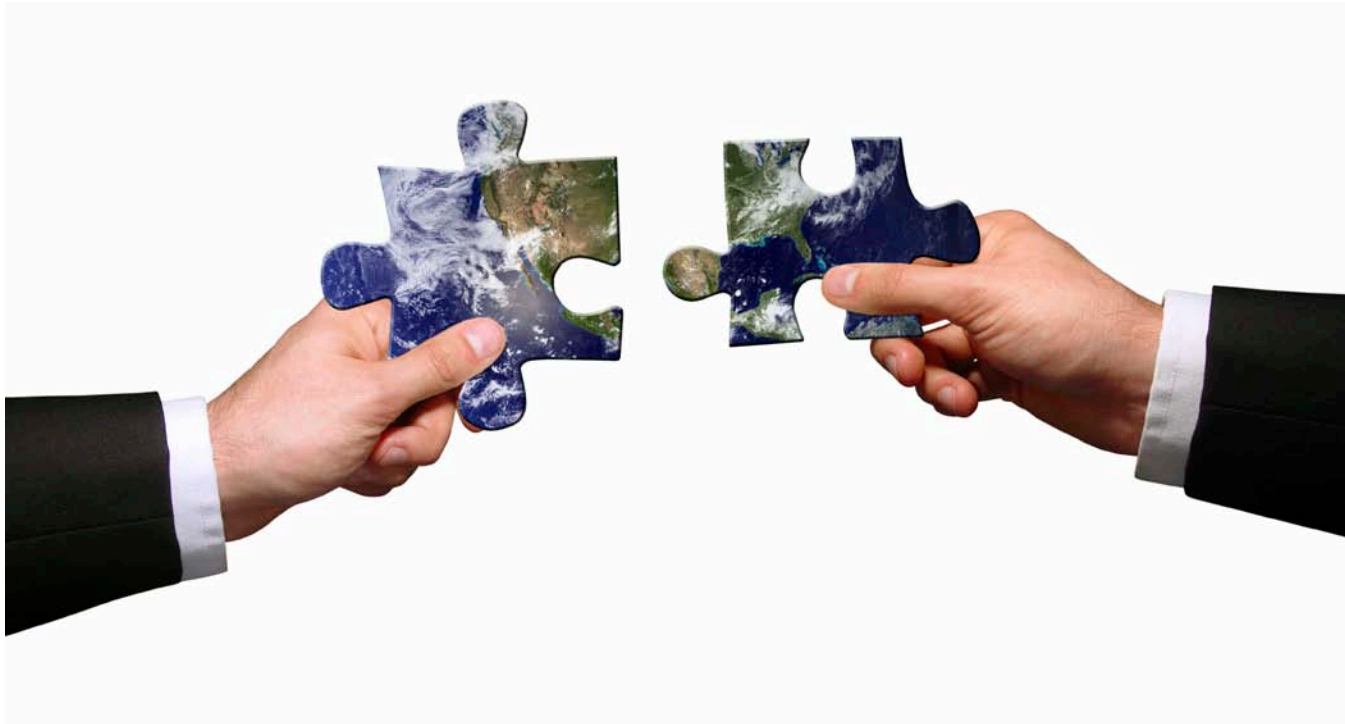
Issues



Issues

- Assistance at airhead
- Adherence to flight timetable

Solution



Teamwork

Cynthia Davidson
Louisiana Region 1 ADRC
cdavidson@mhcno.org
225-939-1313